

# ANALYZER & DISCHARGER AD350

## INSTRUCTION MANUAL



### INTRODUCTION

Thanks for choosing the Hitec AD350 Analyzer & Discharger. The AD350 Discharger supports most RC batteries and works with Hitec's RDX2 1000\* Charger with a discharge current of up to 40A and discharge power of 350W.

\* Hitec anticipates this Discharger will work with other Hitec charger models in the future.



Warning

**BEFORE YOU BEGIN CONNECTING YOUR BATTERY, MAKE SURE YOU HAVE READ AND UNDERSTOOD ALL OF THE WARNINGS AND SAFETY INFORMATION CONTAINED IN THIS MANUAL.**

### DISCHARGE OPERATION INSTRUCTIONS

1. Connect the power supply to the RDX2 1000 Charger. The main menu screen will automatically appear.
2. Connect the AD350 Discharger to the RDX2 1000 Charger.
3. Connect the battery to Port A or through the Parallel connection.
4. Select DISCHARGE to discharge only. Set the voltage cut-off in CONDITION and amperage in CURRENT.
5. To Cycle: Select Balance or Parallel charging, set Cycle to 1 or more and select the Charge and Discharge Amperage. (20A max in Balance/35A max in Parallel).



**Notice:** The Cycle function will always discharge first and then charge so the pack will be ready to use when complete. (This is typically used for Stock Racing to lower the internal resistance of the pack to increase power.)



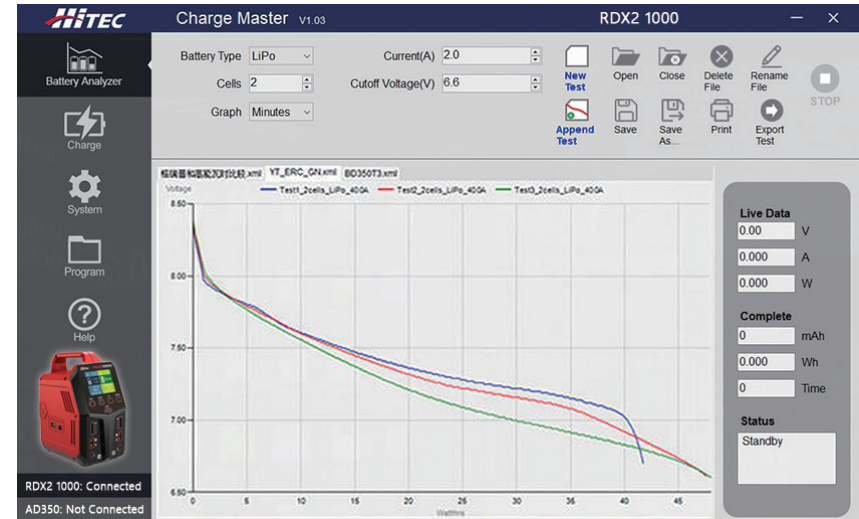
Warning

**PLEASE BE AWARE THAT HIGH AMPERAGE CHARGING AND DISCHARGING CAN REDUCE THE LIFE OF THE BATTERY.**

### ANALYZE VIA THE CHARGE MASTER PC SOFTWARE

The AD350 is more than a simple battery discharger. It is a powerful test instrument that measures, graphs and compares the parameters of various batteries. It allows for the precise measuring of battery capacity and performance.

No more guesswork when choosing the best battery for your RC activities.



**Notice:**

As the time of release, (01/2023) the AD350 Discharger only works with the Hitec RDX2 1000 Charger.

### EXPLANATION OF LED STATUS

LED	Status
Solid Green	Standby
Solid Red	Discharging
Flashing Red	Error

### SPECIFICATIONS

Working Voltage:	DC 5V	Working Temp.:	32° ~ 104°F
Discharge Power:	350W	Working Humidity:	0% ~ 75%
Discharge Current	0.1-40A	Size (L x W x H)	6.2 x 4.1 x 3.7 in.
Over Temp. Protection	> 95°	Net Weight:	43.2 oz.

## WARNINGS AND SAFETY NOTES

### FAILURE TO FOLLOW THESE EXPLICIT WARNINGS CAN RESULT IN PROPERTY DAMAGE, PHYSICAL INJURY AND/OR LOSS OF LIFE.

- ⚠ Never discharge a battery below its recommended cutoff voltage. Over-discharge may damage battery and cause FIRE or EXPLOSION.
- ⚠ Never discharge a battery at a higher discharge rate than it is designed for.
- ⚠ Never leave the discharger unattended when it is connected to battery. If any malfunction is found, TERMINATE THE PROCESS AT ONCE
- ⚠ Place the discharger and battery on a non-flammable surface, and keep away from flammable materials.
- ⚠ Never discharge swollen, leaky, or damaged batteries.
- ⚠ Batteries shall be discharged within a room temperature range of 50° ~104° F.
- ⚠ Disconnect the battery and discharger once discharging has finished.
- ⚠ Recharge batteries immediately with an appropriate battery charger after discharge process is completed.
- ⚠ Some battery types should not be discharged for extended periods of time.

## WARRANTY, SERVICE AND REPAIR

### LIABILITY EXCLUSION

This discharger is designed and approved exclusively for use with the types of batteries stated in this Instruction Manual. Hitec RCD USA accepts no liability of any kind if the discharger is used for any purpose other than that stated. We are unable to ensure that you follow the instructions supplied with the discharger, and we have no control over the methods you employ for using, operating and maintaining the device. For this reason, we are obliged to deny all liability for loss, damage or costs which are incurred due to any misuse or operation of our products. Unless otherwise prescribed by law, our obligation to pay compensation, regardless of the legal argument employed, is limited to the invoice value of Hitec RCD USA products which were immediately and directly involved in the event in which the damage occurred.

### ONE YEAR LIMITED WARRANTY

For a period of one year from the date of purchase, HITEC RCD USA shall REPAIR OR REPLACE, at our option, defective equipment covered by this warranty. Otherwise, the purchaser and/or consumer is responsible for any charges for the repair or replacement of the discharger. This warranty does not cover cosmetic damages and damages due to acts of God, accident, misuse, abuse, negligence, improper installation, or damages caused by alterations by unauthorized persons or entities. This warranty only applies to the original purchaser of this product and for products purchased and used in the United States of America, Canada and Mexico. Plastic cases are not covered by this warranty.

THIS WARRANTY IS IN LIEU OF ANY AND ALL OTHER WARRANTIES, WHETHER FOR MERCHANTABILITY OR FITNESS FOR A PARTICULAR PURPOSE AND WHETHER EXPRESS OR IMPLIED. REPAIR OR REPLACEMENT AS PROVIDED UNDER THIS WARRANTY IS THE EXCLUSIVE REMEDY. HITEC RCD USA SHALL NOT BE LIABLE FOR ANY INCIDENTAL OR CONSEQUENTIAL DAMAGES FOR BREACH OF ANY EXPRESS OR IMPLIED WARRANTY RELATING TO THIS PRODUCT, EXCEPT TO THE EXTENT PROHIBITED BY APPLICABLE LAW. ANY IMPLIED WARRANTY OF MERCHANTABILITY OR FITNESS FOR A PARTICULAR PURPOSE ON THIS PRODUCT IS LIMITED TO THE DURATION OF THIS WARRANTY, REPAIR AND SERVICE.

### SERVICE AND REPAIR INFORMATION - To have your Hitec discharger serviced:

1. Visit the Hitec website at [www.hiteccrd.com](http://www.hiteccrd.com) and download the service request form.
2. Fill out the service request form completely and include a copy of your original receipt showing the purchase date.
3. Package your product in its original packaging or use a suspension-type packaging (foam peanuts or crumpled newspaper). Hitec RCD USA shall not be responsible for goods damaged in transit.
4. Ship prepaid (COD or postage-due returns will not be accepted) via a traceable common courier (UPS, insured parcel post, FedEx, etc.) to:  
**Hitec RCD USA / Customer Service Center, 9320 Hazard Way, Suite D, San Diego, CA 92123**



**THE AD350 DISCHARGER WARRANTY IS VOID IF SOLD AND/OR OPERATED OUTSIDE THE UNITED STATES.**

## MAXIMUM DISCHARGE POWER CHART

Battery Type	No. of Cells	Min. Cut-off Voltage	Voltage	Min. Discharge Current (A) Discharging power: 350W	Max. Discharge Current (A) Discharging power: 350W	
LiPo	2S	6	8.4	40	40	
	3S	9	12.6	27.77	38.88	
	4S	12	16.8	20.83	29.16	
	5S	15	21	16.66	23.33	
	6S	18	25.2	13.88	19.44	
	7S	21	29.4	11.9	16.66	
	8S	24	33.6	10.41	14.58	
	LiHV	2S	6.2	8.7	40	40
3S		9.3	13.05	26.81	37.63	
4S		12.4	17.4	20.11	28.22	
5S		15.5	21.75	16.09	22.58	
6S		18.6	26.1	13.4	18.81	
7S		21.7	30.45	11.49	16.12	
8S		24.8	34.8	10.05	14.11	
NiMH		6S	5.4	9	38.88	40
		7S	6.3	10.5	33.33	40
		8S	7.2	12	29.16	40
	9S	8.1	13.5	25.92	40	
	10S	9	15	23.33	38.88	
	11S	9.9	16.5	21.21	35.35	
	12S	10.8	18	19.44	32.4	
	13S	11.7	19.5	17.94	29.91	
	14S	12.6	21	16.66	27.77	
	15S	13.5	22.5	15.55	25.92	
16S	14.4	24	14.58	24.3		
17S	15.3	25.5	13.72	22.87		
18S	16.2	27	12.96	21.6		
19S	17.1	28.5	12.28	20.46		
20S	18	30	11.66	19.44		



This symbol indicates that when this type of electronic device reaches the end of its service life, it cannot be disposed of with normal household waste and must be recycled. To find a recycling center near you, refer to the internet or your local phone directory for electronic waste recycling centers.

### STATE OF CALIFORNIA PROPOSITION 65 WARNING:

This product contains chemicals known to the State of California to cause cancer. Use caution when handling this product and avoid exposure to any electronic components or internal assemblies.

Made In China



This manual is subject to change without notice. Please refer to the Hitec RCD USA website for the latest version.

Distributed by: Hitec RCD USA | 9320 Hazard Way Ste D, San Diego, CA 92123 | (858)748-6948 | [www.hiteccrd.com](http://www.hiteccrd.com)